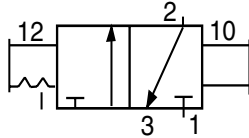
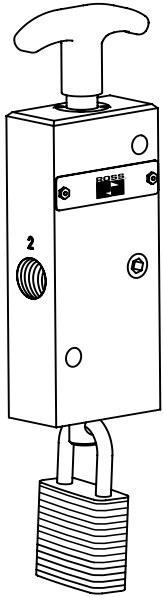


# New Product Introduction

## L-O-X<sup>®</sup> Valves Energy Isolation 15 Series Manual L-O-X<sup>®</sup> Port Sizes 1/4 and 3/8



Manual L-O-X<sup>®</sup> valve shown padlocked in closed position. The valve can only be locked in the closed position.

**Push/pull operation**  
Push the handle inward to exhaust downstream air (lockable in this position). Pull the handle outward to supply air downstream.



### STANDARD SPECIFICATIONS

**Ambient/Media Temperature:**  
40° to 175°F (4° to 80°C).

**Flow Media:**  
Compressed air, filtered  
(5 micron recommended).

**Inlet Pressure:**  
15 to 145 psig (1 to 10 bar).

**Port Threads:**  
NPT standard, BSPP.

**Lock Hole Diameter:** 0.27 inch (7.06 mm).

**Length of Hole:** 0.43 inch (10.92 mm).

**NOTE:** Per specifications and regulations, these products are defined as energy isolation devices, **NOT AS EMERGENCY STOP DEVICES.**

### Referenced Standards:

All standards are subject to revision. Parties are encouraged to investigate and apply the most recent editions of the standards indicated below.

OSHA 29 CFR 1910.147  
CSA Z142-02  
CSA Z460-05  
ISO 13849-1  
ISO 14118:2000  
EN 1037  
ANSI/ASSE Z244.1- 2003  
ANSI/PMMI B155.1- 2006



### GENERAL:

ROSS L-O-X<sup>®</sup> valves are pneumatic energy isolation devices and are generally used as the first valve in a line supplying compressed air to equipment. Air can be shut off by pushing the red L-O-X<sup>®</sup> handle inward; downstream air is simultaneously exhausted through the L-O-X<sup>®</sup> exhaust port. OSHA compliance requires that the valve be padlocked in this position to prevent handle from being pulled out inadvertently during maintenance and/or servicing.

### FEATURES:

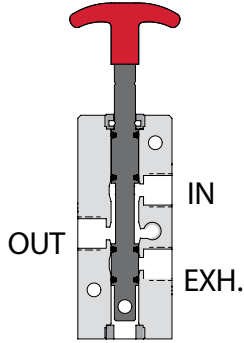
- Easily identified by unique shape
- Lockable only in the OFF position
- Large exhaust port for rapid release of pressure
- Special Teflon seals help ensure "shift-ability" even after long periods of non-use
- Positive action (2 positions only)
- Simple push/pull of the red handle provides positive direct manual operation
- Pressure sensing port allows installation of either a Pop-Up Indicator or Pressure Switch (see page 2) to verify pressure is release.



## VALVE OPERATION

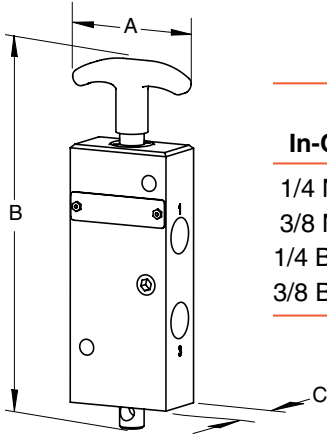
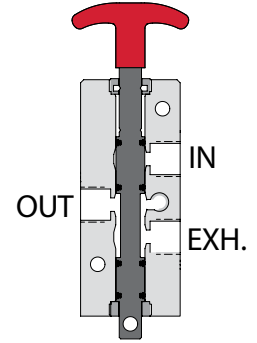
### VALVE OPEN

When the red handle is pulled outward supply air flows freely from inlet to outlet and flow to exhaust is blocked. A detent keeps the handle in the open position.



### VALVE CLOSED

When the red handle is pushed inward, the flow of supply air is blocked and downstream air is exhausted via the exhaust port. While servicing or maintaining machinery, the L-O-X® valve should be padlocked in this position to prevent the handle from being pulled outward inadvertently where potential for human injury exists.



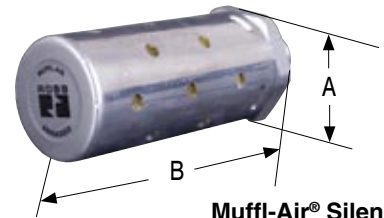
Port Size		Valve Model Number	Avg. C <sub>v</sub>		Dimensions inches (mm)			Weight lb (kg)
In-Out	Exh.		In-Out	Out-Exh.	A	B	C	
1/4 NPT	1/4 NPT	Y1523C2002	1.9	1.9	2.3 (58)	6.5 (166)	1.0 (26)	0.83 (0.36)
3/8 NPT	3/8 NPT	Y1523C3012	2.5	2.6	2.3 (58)	6.5 (166)	1.0 (26)	0.83 (0.36)
1/4 BSPP	1/4 BSPP	YD1523C2002	1.9	1.9	2.3 (58)	6.5 (166)	1.0 (26)	0.83 (0.36)
3/8 BSPP	3/8 BSPP	YD1523C3012	2.5	2.6	2.3 (58)	6.5 (166)	1.0 (26)	0.83 (0.36)

## ACCESSORIES

### Muffl-Air® Silencer

Port Size	Average C <sub>v</sub>	Model Number	Threads*	Dimensions inches (mm)		Weight lb (kg)
				A	B	
1/4	2.0	5500A2003	Male	0.8 (21)	2.2 (56)	0.3 (0.1)
3/8	5.7	5500A3003	Male	1.3 (32)	3.8 (9.6)	0.5 (0.2)

\* NPT port threads. For BSPP threads, add the letter "D" in front of the part number.



Muffl-Air® Silencer

### Pneumatic Energy Release Verification Options

Model Number*	Port Size	
988A30	1/8	Pop-Up
586A86	1/8	Pressure Switch

\* NPT port threads.



Pop-Up Indicator

Pressure Switch



**ROSS CONTROLS®**  
U.S.A.

Customer Svs. 1-800-GET-ROSS  
Technical Svs. 1-888-TEK-ROSS  
www.rosscontrols.com

### WARRANTY and CAUTIONS

Standard ROSS warranty and cautions apply, available upon request or at  
[www.rosscontrols.com](http://www.rosscontrols.com)

**ROSS EUROPA GmbH**  
Germany

Fax: 49-6103-74694  
info@rosseuropa.com

**ROSS ASIA® K.K.**  
Japan

Fax: 81-427-78-7256  
custsvc@rossasia.co.jp

**ROSS UK Ltd.**  
United Kingdom

Fax: 44-121-559-5309  
sales@rossuk.co.uk

**ROSS CONTROLS® INDIA Pvt. Ltd.**  
India

Fax: 91-44-2625-8730  
rossindia@airtelbroadband.in

**ROSS SOUTH AMERICA Ltda.**  
Brazil

Fax: 55-11-4335-3888  
vendas@ross-sulamerica.com.br

**DIMAFLUID s.a.s.**  
France

Fax: 33-01-4945-6530  
dimafuid@dimafuid.com

**ROSS CONTROLS(CHINA) Ltd.**  
China

Fax: 86-21-6915-7960  
alvinzhurong@vip.163.com